

ARO®



AIR SOLUTIONS

AIR TREATMENT AND PNEUMATIC VALVES



ARO-Flo Series

Clean air is a key ingredient that enables effective and efficient operation of tools, equipment, and machinery in almost every industry. As such, the use of air preparation devices, such as filters, regulators, and lubricators (FRLs) is an excellent means of keeping your air supply in top condition, as well as enabling your tools and equipment to operate at their peak performance.

1000 Series	1500 Series	2000 Series	3000 Series	Super Duty
				
1/8" & 1/4" Ports	1/4" & 3/8" Ports	3/8", 1/2" & 3/4" Ports	3/4" & 1" Ports	1", 1-1/4", 1-1/2", 2" & 3" Ports
Max Inlet Press: Poly bowl 150 psi Metal bowl 250 psi Series size: Miniature	Max Inlet Press: Poly bowl 150 psi Metal bowl 250 psi Series size: Compact	Max Inlet Press: Poly bowl 150 psi Metal bowl 250 psi Series size: Standard	Max Inlet Press: Metal bowl 250 psi Series size: Heavy Duty	Max Inlet Press: Filter Metal bowl 300 psi Lubricator Metal bowl 200 psi Series size: Super Duty

- SAFETY:** Designed with locking bowls and clear multilingual markings
- BEST-IN-CLASS AIR FLOW PERFORMANCE:**
38% better than the competition
- MODULARITY:** All ARO-Flo products are designed to integrate with each other
- QUICK ASSEMBLY:** Can be easily, safely and quickly assembled or disassembled with a minimum of tools – no fuss or complications

	1/8" Port Size	1/4" Port Size	3/8" Port Size	1/2" Port Size	3/4" Port Size	1" Port Size	1-1/2" Port Size	2" Port Size
1000 Series	46 scfm*							
1500 Series		85 scfm*						
2000 Series			150 scfm*					
3000 Series					215 scfm*			
Super Duty						1200 scfm		
Specialty Regulators	Precision, Stainless Steel and Brass Regulators							

* Flow rates based off of Filter/Regulator/Lubricator combination unit. Individual units flow rates are higher.



- | | |
|--------------------------|-----------------------|
| 1 Modular Pipe Adapter | 7 Regulator |
| 2 T-Brackets | 8 ARO-Flo Check Valve |
| 3 Modular Spacers | 9 Manifold Port Block |
| 4 Modular Lock-Out Valve | 10 Pressure Switch |
| 5 Soft-Start Valve | 11 Lubricator |
| 6 Filter w/indicator | |



Ingersoll Rand attests that ARO-Flo Series of filters, regulators, lubricators (1000, 1500, 2000, 3000 Series) and select accessories are out of scope for ATEX Directive 94/9/EEC or 2014/34/EU. The products listed in IRIS-1215-197 certificate can be used in group II, category 2 environment; Gas and Dust with temperature a T6 (Ex II 2GD T6) if all conditions set up in the Instruction Manual are met. Instruction Manuals and certificate regarding ATEX Declaration can be found at AROZONE.COM

Whether it's high flow or compact design, count on ARO Valves for your application. Models in 2-way, 3-way and 4-way functions with a variety of actuators and returns.

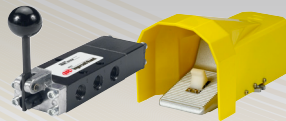
Direct Acting Solenoid



Premair and CAT Series

Ideal for use with small disposable cylinders and electric to air interface

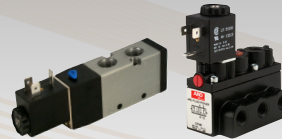
Manual/Mechanical



E, 50, K and Maxair Series

15 different actuator styles
Ideal for starting, stopping and sequencing

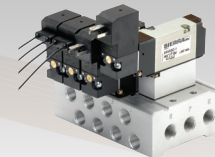
Inline Solenoid Pilot



Alpha, K, Maxair

Ideal for all general industrial applications

Manifold Plug N Play



Alpha, Maxair and Sierra

Compact and flexible for applications where multiple valves are required in tight spots

- **INTERCHANGEABILITY:** Many series are interchangeable with competitive models
- **Non-Lube Service:** All valves are pre-lubed at the factory. No additional lube required
- **PERFORMANCE:** Excellent flow rates across entire series of valves
- **5 Year Warranty:** No worries. ARO builds some of the most dependable and durable valves in the market



Sierra Series

Compact 2-position, 4-way valves that are lightweight, yet durable. 10mm, 15mm or 18mm wide. Body ported or sub-base mounted. Single and double solenoids available. M5 (10-32) and 1/8" ports.

MaxAir Series

2, 3 and 4-way air solenoid, pilot and hand lever valves feature excellent flow in a compact, lightweight package.

Alpha Series

High flow, 2-and-3-position, 4-way valves that are compact in size with many features. The family includes: Body Threaded, Stacking, Bar Manifold and Assembled Manifold. Single and double solenoids, or pilot actuators are available. 1/8", 1/4" and 3/8" ports.

Cat Series

Small, 3-way solenoid valves. Perfect for small bore, single acting cylinders and electric to air interfacing applications. Body ported for stand alone applications, stacking or base manifold. Available as normally open or normally closed. 1/8" and 1/4" ports.

50 Series

3-way and 4-way body ported valves. Six manual, mechanical and pilot actuator styles available. 1/8" ports.

E-Series

3-way and 4-way body ported valves. Nine manual, mechanical, pilot and solenoid actuator styles available. 1/4" ports.

K-Series

Manual, Pilot and Solenoid, heavy duty 4-way valves. Available as body threaded or bottom ported for stand alone sub-base. Seven actuator styles available. Manual: 3/8" and 1/2" ports. Solenoid and Pilots: 3/8", 1/2", 3/4" and 1" ports.

H-Series

High flow 3-and-4-way function Poppet valves. Available in solenoid, pilot and bleed actuators. 1/4", 3/8" and 1/2" ports.

Premair™

3-and-4-way direct acting solenoid valve. Rugged construction and lightweight, stand alone and stacking. Available in 1/8" ports.

Distributed by:



ユニツール株式会社

東京都多摩市関戸4丁目8番地18
〒206-0011 TEL: 042-376-8747
FAX: 042-376-8748

www.AROzone.com

arotechsupport@irco.com

youtube.com/aropumps

(800) 495-0276



About Ingersoll Rand

Ingersoll Rand Inc. (NYSE:IR), driven by an entrepreneurial spirit and ownership mindset, is dedicated to helping make life better for our employees, customers and communities. Customers lean on us for our technology-driven excellence in mission-critical flow creation and industrial solutions across 40+ respected brands where our products and services excel in the most complex and harsh conditions. Our employees develop customers for life through their daily commitment to expertise, productivity and efficiency. For more information, visit www.IRco.com.

We are committed to using environmentally conscious print practices

©2015 Ingersoll Rand

IRITS-1015-170 EN 0216